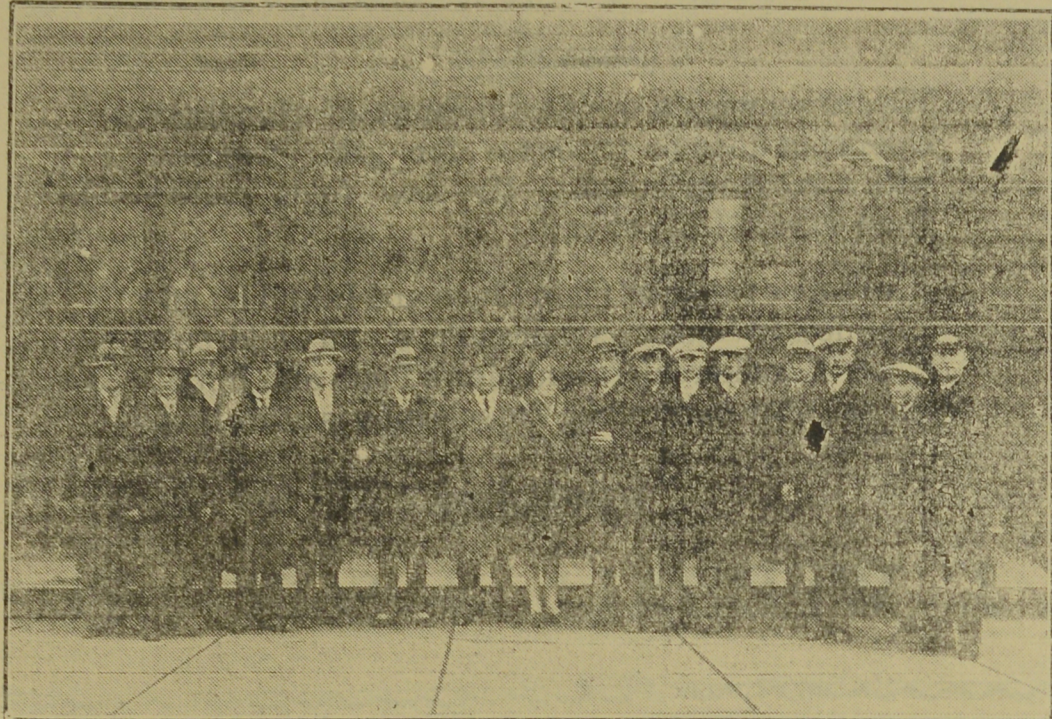


WINNERS EN ROUTE ROYAL WINTER FAIR



Some of the winners in the Maritime Provincial Calf Club competitions en route via Canadian National Railways to Toronto to compete in the new W. J. Black trophy donated by Dr. W. J. Black, Director of Colonization and Agricultural of the National System, at the Royal Winter Fair. The contest embraces the Calf Clubs and the Cattle Breeding Clubs which are organized in Eastern Canada and will be held simultaneously with the competition among Swine Breeding Clubs for the W. D. Robb trophy of the Canadian National Railways emblematic of the All Canada Championship. The winners of the provincial competitions are the guests of the Canadian National Railways, all expenses for their trip to and from Toronto and while there, being defrayed by the Railway. While in Toronto a splendid programme of entertainment has been arranged, including visits to outstanding farms in the Toronto district, packing plants, side trip to Niagara Falls and possibly a championship football game. Accompanying the successful Maritime Provincial contestants in addition to others are Col. R. Innis, Deputy Minister of Natural Resources, Nova Scotia; J. K. King, Manager, Maritime Live Stock Marketing Board; Prof. John Trueman, Principal of the Agricultural College, Truro; Walter Shaw, Supt. Live Stock, Dept. Agriculture, Prince Edward Island; F. C. Biette, Supt. of Land Settlement for the Maritimes, C. N. R., Moncton, N. B.

Western hard wheat is the best wheat in the world. Purity Flour is made only from the finest Western wheat. Purity, therefore, is unexcelled.

PURITY FLOUR
More Bread and Better Bread

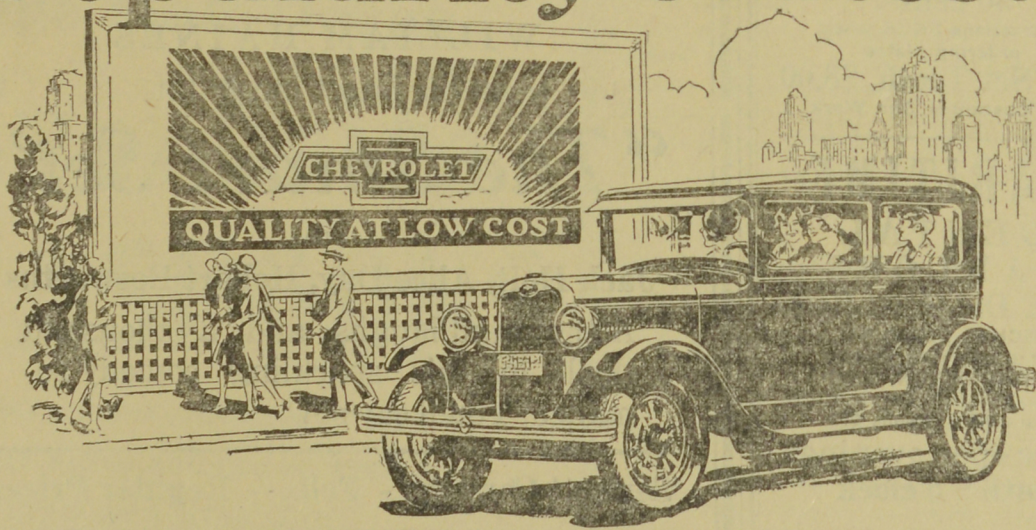
WHEN PACKING FOR VACATION NEVER FORGET

You are sure to need some handy remedy for Sunburn, Insect Stings, Thorn Scratches, Sore Places. Zam-Buk has been proved to be the best. Take a box with you.

50c box, all Druggists and Stores.

ZAM-BUK

The Greatest Popularity Contest



COACH \$740

Roadster - \$625.00
Touring - 625.00
Coupe - 740.00
Sedan - 835.00
Imperial Sedan - 890.00
Convertible Cabriolet - 865.00
Commercial Chassis - 470.00
(Body Extra)
Roadster Express - 650.00

Above prices at Factory, Oshawa
— Government Taxes, Bumpers and Spare Tire Extra.
Utility Truck Chassis \$665.00
At Factory, Walkerville, Ont.—
Government Taxes, Spare Tire and Body Extra.

THE public has judged motor-car values. It has staged the greatest of popularity contests.

Never has Chevrolet enjoyed such whole-hearted public acceptance — never before has any low-priced car offered such a striking combination of great beauty, thrilling performance and amazing economy!

To sit behind the wheel is sheer delight.

Come in and see the world's most popular car. Experience for yourself the wonder of its performance. Learn for yourself why it is the greatest success of the year.

The G.M.A.C. . . General Motors' own deferred payment plan affords the most convenient and economical way of buying your Chevrolet out of income.

C-20-10-288

CHEVROLET

J. CLARK & SON, LIMITED

Fredericton, N. B.

PRODUCT OF GENERAL MOTORS OF CANADA, LIMITED

CANADIAN DEVELOPMENT IN YEAR 1928 HAS MADE GREAT AND VARIED STRIDES

(Journal of Commerce.)

Canada's record wheat harvest of over five hundred million bushels draws attention to the fact that agriculture is still the Dominion's leading industry but the remarkable progress which has been made in recent years in the development of her forest, mineral, waterpower, and other resources shows that this country instead of confining her energies to a few extractive industries is making a broad-fronted advance in many fields of activity.

Ranking second to agriculture in value of products, our forest industries loom large in Canada's economic structure. The growth of pulp and paper production in recent years has been rapid and spectacular and since 1926 the Dominion has been the world's greatest newsprint producer. For the first eight months of 1928, Canadian mills produced 206,109 tons more newsprint than in the corresponding period of 1927, or an increase of 15 per cent. The erection of new mills and additions to present producers indicate that the Dominion's total will be further increased in the immediate future. The effect of expansion in this as in most of the other industries engaged in the development of the Dominion's natural resources is seen in the growth of our towns and cities and in the springing up of new communities. As typical of this growth the new 500-ton newsprint mill at Kapuskasing, Ontario, recently opened, is the centre of a model town planned and built for the employees of the operating company. Besides the mill buildings, covering seven and a half acres, three hundred and fifty houses have been erected, and the hotel, hospital, school and community hall are modern structures in every way. The town has about 5,000 inhabitants most of whom secure employment through the paper industry.

An increasing demand for lumber for export and a slight increase in price have brought about a general improvement in the lumber industry not only in British Columbia but also in the eastern provinces. The demand for British Columbia shingles is brisk and the mills are working to capacity.

Mining Industry.

The mining industry is thriving. Exploratory and prospecting operations are being carried on in practically every province of the Dominion, especially in British Columbia and in those areas underlain by the Precambrian in the northern parts of the provinces of Quebec, Ontario, Manitoba, and Saskatchewan, and in the Northwest Territories. Extensive exploratory work, in which the aeroplane is rendering valuable assistance, is being carried on in the more remote parts of the country both east and west of Hudson Bay, and these vast territories will soon be rendered more accessible by the completion of the Hudson Bay railway to Churchill. It is confidently expected that these activities, together with the developments that are going forward in other parts of the Dominion will soon be reflected in a substantial increase in Canada's annual mineral output.

Outstanding developments now in progress include those undertaken in the Sudbury district of Ontario which involve the immediately expenditure of millions of dollars, and those proceeding in the northern Manitoba-Saskatchewan boundary region. A great deal of work is also being done in the Rouyn and adjoining areas in western Quebec. In the Kirkland Lake district of Ontario aggressive policies have resulted in the gold output of this camp reaching a record high total with a value of more than \$6,000,000 for the first half of the year, and the situation in the other provinces is, on the whole, very satisfactory.

The prospective output of the mining industry is a factor which cannot be ignored in formulating any estimate of Canada's economic future. At present, according to the latest available statistics, there are 10,256 mines, metallurgical works, oil and gas wells, quarries, cement, lime and brick plants, and other units actually engaged in mining and allied operations within the Dominion, representing an estimated capital investment of over \$700,000,000 and giving permanent employment to more than 80,000 workers. In 1927 the net value of sales from these various industries

reached \$248,385,031, or 4.6 per cent more than the total for the previous year. In the field of copper production alone Canada in 1927 attained fourth place among the world's greatest producers of this metal. The Dominion is also forging ahead in the production of gold, lead, and zinc, and still retains first place among the world's producers of nickel, cobalt, and asbestos.

Water Power.

The development of Canada's waterpower resources continues apace. Notwithstanding the gigantic undertakings which have been completed in recent years new projects are adding to the total installations year by year. The expansion of the forest and mining industries, in which hydro-power is playing a large and increasing part, has contributed to the demand for more electrical energy. The outstanding waterpower undertaking brought to completion this year was the new transmission line from Fitzroy Harbour on the Ottawa river to Toronto. This line, which was built by the Ontario Hydro-Electric Commission, links up at the Ontario-Quebec provincial boundary with that from the Pagan Falls plant of the Gattineau Power Company. On October 1, the first delivery of power (80,000 horse power) was made and this will be gradually increased during the next three years until the full load of 260,000 horse-power is reached. The initial installation of six 34,000 horse-power units at the Pagan Falls development was also completed this year. Several other projects of major importance have been put in operation during recent months. In New Brunswick the first of three units of 20,000 horse-power capacity in the Grand Falls development of the Saint John River Power Company was placed in operation on October 1. This constitutes the largest single development in the Maritime Provinces. In Quebec an addition of 43,000 horse-power has been made by the Shawinigan Water and Power Company to its plant on the St. Maurice river and the Canadian Northern Power Company has installed two 10,000 horse-power units in their Quinze River powerhouse. The Ontario and Minnesota Power Company has completed its third plant on the Seine river where 13,200 horse-power is being produced, and the Spruce Falls Company has put in operation its initial development of 56,250 horse-power at Smoky Falls on the Mattagami river, Ontario. In Manitoba, 56,000 horse-power has been added to the development by the Manitoba Power Company at Great Falls on the Winnipeg river. This brings the development to its ultimate designed capacity of 168,000 horse-power.

New Railway.

During the first seven months of 1928, 172 miles of new railway were put into operation by the larger companies of Canada. Since the completion of these figures other railway projects have been materially advanced, and in some cases completed, so that a considerable increase may be expected in the above figures by the close of the year. One of the most important projects recently completed was the branch line from the Pas. Manitoba, northwestward to the Flin-flon mining area. In this undertaking new and radical methods of construction were successfully employed with the result that the line was completed and in operation more than three months before the contract time. In order to accomplish this the rails for the first fifty miles were laid on the frozen ground and after the supplies for the remaining part of the road had been transported, the work of raising and ballasting the first portion was proceeded with.

The year 1928 marks a period of rapid growth in the economic structure of the Dominion and on every hand here is evidence of the progress being made in exploration, development, and production.

Tommy entered the village store with an assured air and said to the man: "I want a lamp globe and mother says she would like it as strong as the bacon she bought here yesterday."

That motor car 125 feet long may be practicable if the back-seat driver is thus eliminated.

FIRE ALARM LOCATION IN THE CITY

- 6 Argyle and York Sts.
- 7 Victoria Public Hospital.
- 8 Children's Home.
- 12 Westmorland and Aberdeen Sts.
- 13 Northumberland and Saunders Sts.
- 14 Brunswick and Smythe Sts.
- 15 Charlotte and Smythe Sts.
- 16 George and Northumberland Sts.
- 17 King and Northumberland Sts.
- 21 York and Queen Sts.
- 23 York and George Sts.
- 24 Queen and Westmorland Sts.
- 25 Brunswick and Westmorland Sts.
- 26 Charlotte and Westmorland Sts.
- 27 King and York Sts.
- 28 Saunders and York Sts.
- 31 Queen and Regent Sts.
- 32 Needham and Regent Sts.
- 34 Queen and Carleton Sts.
- 35 Brunswick and Carleton Sts.
- 36 Charlotte and Carleton Sts.
- 37 George and Regent Sts.
- 38 King and Regent Sts.
- 43 Aberdeen and St. John Sts.
- 44 Queen and St. John Sts.
- 45 Brunswick and St. John Sts.
- 46 Charlotte and St. John Sts.
- 51 King and Church Sts.
- 52 George and Church Sts.
- 53 Union and Church Sts.
- 54 Shore Street and Waterloo Row.
- 55 George Street and University Avenue.
- 56 Lansdowne and Waterloo Row.
- 57 Grey Street and University Ave.
- 112 Aberdeen and Smythe Sts.

During the past summer, according to D. C. Coleman, Vice-President, Western Lines. By this means hundreds of farmers had been brought much closer to transportation facilities, and thousands of acres of rich agricultural land had been made much more attractive from the settlers' viewpoint.

"I can say, without any hesitation, that Canada is the best country in the world for farming at the present time. It has greater possibilities, and there are indications that there is greater stability and prosperity than can be found in any other country," said Dr. E. S. Archibald, director in charge of the Dominion Experimental Farm at Ottawa, addressing the Young Men's Canadian Club in Montreal. Dr. Archibald said the crops in Canada are worth \$1,167,000,000, which alone was equal to the fisheries, mines and forests all put together.

The province of Alberta generally will receive more game fish than ever before, was the opinion of J. A. Robb, superintendent of fish culture of the Department of Marine and Fisheries, who was a recent visitor to Calgary. The whitefish hatchery just opened by the Dominion Government in Lesser Slave Lake, will help the commercial fisheries, he said, while sport in the neighbourhood of Banff, the Rocky Mountain resort, will be greatly improved by the advanced fry and fingerling game fish that have been placed in the streams. The hatchery at Banff, he added, will be extended slightly.

NOTICE OF SALE

To the Heirs of Coburn Allen, late of the Parish of Douglas, in the County of York and Province of New Brunswick, Labourer, deceased, and to all others whom it may in any wise concern,—

Notice is hereby given that by virtue of a Power of Sale contained in an Indenture of Mortgage bearing date the second day of June, A. D. 1928, and registered in York County Records in Book 206, pages 119-122, the eleventh day of October, A. D. 1928, and made between the said Coburn Allen, of the one part, and Kitchen Bros., Ltd., of the other part, incorporated under the laws of the Province of New Brunswick having its head office at the City of Fredericton in the County of York aforesaid, of the other part, there will, for the purpose of satisfying the moneys secured by the said mortgage, default having been made in the payment thereof, and in pursuance of the said Power of Sale, be sold at Public Auction in front of the Post Office in the City of Fredericton in the County of York aforesaid, on Saturday, the twelfth day of January, A. D. 1929, at twelve o'clock noon, the lands and premises mentioned and described in the said mortgage as follows:

"All that certain lot, piece or parcel of land situate, lying and being in the Parish of Douglas, County of York, and Province of New Brunswick at or near 'Burt's Corner' and bounded as follows: Beginning at a post at the Southwest corner of a lot of land owned by 'Newton Bird'; thence running North along side line of said Newton Bird's lot nine rods, thence at right angles and running West fifty three feet to a post; thence at right angles and running South nine rods to the main highway road; thence along said highway road to the place of beginning, fifty three feet, containing one-sixth of an acre, more or less. Being the same lands and premises conveyed by Deed from Thomas W. Fowler and wife to Coburn Allen, and recorded in York County Records in Book 185, pages 185 and 186, under official number 74554, and bearing date the 22nd day of August, A. D. 1925. Together with all the buildings and improvements thereon and the rights and appurtenances thereto belonging or appertaining."

Dated this ninth day of November, A. D. 1928.
KITCHEN BROS., LTD.,
per H. A. Peters, Solicitor-Trustee.