

THEATRE of the AIR

ALL TIMES ATLANTIC STANDARD TIME

SATURDAY'S PROGRAMMES

CANADIAN BROADCASTING CORP.
This is the official programme which you are entitled to receive over Stations CFNB, CHSJ, CKCW, and CHNC.

CBC, OTTAWA, 550 K.
6.00—Variety Show
6.30—Doris Foote, Contralto
6.45—Closing Stock Quotations
7.00—Len Salvo, Organist
7.15—Four Californians
7.30—Lucio Agostini
8.00—Luigi Romanelli and Orch.
8.30—Book Review
8.45—Novelty Program
9.00—Ten Thousand Miles in the Air
9.15—Irene Lander
9.30—Reflections
10.00—Louisiana Hayride
10.30—BBC Music Hall
11.00—NBC Jamboree
11.30—Horace Lapp's Orch.
11.45—The News
12.00—Orchestra
12.30—Orchestra
1.00—Orchestra

CKAC, MONTREAL, 730 K.
6.00—Social Announcements
6.45—Classical Interlude
7.00—Sports Parade
7.30—Gems of Melody
8.00—Le Bon Parler Français
8.15—To be Announced
8.30—Saturday Swing Session
9.00—Old Fashioned Spelling Bee
9.30—To be Announced
10.00—To be Announced
11.00—Les Chevaliers du Folklore
11.15—Westinghouse Newscast
11.30—Berceuse
11.45—Patti Chapin, Songs
12.00—Molson Sports Reporter
12.30—Orchestra
1.00—Orchestra

WEAF, NEW YORK, 660 K.
6.30—Kaltenmeyer's Kindergarten
7.00—El Chico
7.30—Press Radio News
7.35—Today's Sports
7.45—The Art of Living
8.00—Top Hatters
8.20—Football Scores
8.30—Steinie Bottle Boys
8.45—Jimmy Kemper
9.00—Meredith Wilson
9.30—Linton Wells
9.45—Concert Orchestra
10.30—Special Delivery
11.00—NBC Jamboree
11.30—Orchestra
12.00—Orchestra
12.30—Orchestra
1.00—Orchestra

WABC, NEW YORK, 880 K.
5.15—The Dancepators
5.45—George Olsen and Orch.
6.15—Frank Dalley's Orch.
6.45—Dorothy Gordon's Corner
7.00—Columbia Concert Hall
7.25—Press Radio News
7.30—Eddie Dooley's News
7.45—Fighting Crime
8.00—Count Basie and Orch.
8.15—Ben Feld's Orch.
8.30—Saturday Night Swing Club
9.00—Your Unseen Friend
9.30—Johnny Presents
10.00—Professor Quiz
10.30—Among Our Souvenirs
10.30—To be Announced
11.00—Your Hit Parade
11.45—Patti Chapin, Songs
12.00—Orchestra
12.30—Orchestra
1.00—Orchestra

WBZ, BOSTON, 990 K.
6.45—Orchestra
7.00—Piano Recital
7.30—Press Radio News
7.35—To be Announced
8.00—Message of Israel
8.30—Uncle Jim's Question Bee
9.00—Home Towners
9.30—Nola Day, Songs
10.00—National Barn Dance
11.00—Gun Smoke Law
11.30—Gems of Light Opera
12.00—Orchestra
12.30—Orchestra
1.00—Orchestra

WTIC, HARTFORD, 1040 K.
6.00—Vagabond Adventures
6.30—Kaltenmeyer's Kindergarten
7.00—News
7.15—Casey at the Mike
7.30—Wrightville Clarion
7.45—Behind the Scenes
8.00—Top Hatters
8.30—Shero Trio
8.45—Sports of the Week
9.00—Meredith Willson's Orch.
9.30—Linton Wells, Commentator
9.45—NBC Concert Hour
10.20—Special Delivery
11.00—Jamboree
11.30—Orchestra
12.00—News
12.15—Orchestra
12.30—Orchestra
1.00—Weather

SUNDAY'S PROGRAMMES

CANADIAN BROADCASTING CORP.
This is the official programme which you are entitled to receive over Stations CFNB, CHSJ, CKCW, and CHNC.

CBC, OTTAWA, 550 K.
6.00—Choir Invisible

She Sings and Dances



Donna Dae, one of the featured artists of the "Singing Cuties," heard on Edgar Guest's "It Can Be Done" program over the NBC-Blue network Wednesday nights at 8:30, E. S. T. Donna's work on radio is already attracting the attention of Hollywood producers.

KOSTELANETZ TO POCKET EDITION OF DUCAS' WORK

Sorcerer's Apprentice Will be Played First Time Condensed

OCT. 20, 10 P. M.

"Listener's Digest" Will Also Feature Other Known Selections

André Kostelanetz and his symphony orchestra of 58 men will present a pocket edition of the "Sorcerer's Apprentice" on the fourth of his new "Listeners' Digest" series on Wednesday, October 20, at 9 P. M., EST, over WABC CBS. Elisabeth Rethberg, well-known Wagnerian soprano, will be the Kostelanetz guest-star.

The "Sorcerer's Apprentice," written by Dukas at the turn of the century was originally scored for a playing time of 12 minutes. Kostelanetz, believing that all of the great qualities of the music can be retained, has condensed the composition into a five-minute presentation.

As originally written, the music repeats almost every dramatic situation at least twice. By eliminating repetition and recapitulation of action, Kostelanetz tells the same story, musically, in less than half the time.

As other features of his "Listeners' Digest," the conductor will play the introduction of Act III of "Lohengrin" and the "Mardi Gras" from Ferde Grofé's "Mississippi Suite."

Miss Rethberg will sing "Elsa's

C.B.C. Pianist Will Play Two Songs At Once on Sunday Spot

Russ Gerow, pianist and arranger, will present a novel piano feature by playing two tunes at the same time on the CBC programme, "Piano Musings," to be presented over the national network on Sunday, October 17, at 3:30 p. m. AST. Mr. Gerow will play the popular song "There Isn't Any Limit To My Love" with one hand and will render the past success "I Love You" with the other hand.

The popular melodies listed for this programme, which include "The Love Nest," "She Shall Have Music," "Memories," and "Deep Night," have been specially arranged in modern piano harmony by Gerow.

Russ Gerow came to Toronto from London, Ontario, where he conducted an orchestra and played piano solos. He is considered one of the finest arrangers in the province and also has written a number of compositions.

The real name of "Aunt Jenny" around whom the CBS "True Life Stories" are based, has never been released for publication.

Reed Kennedy is one of the most in-demand radio singers for concerts.

Al Jolson's pet aversion revolves around Jolson imitators.

Wilbur Hatch, the bandsman, once was manager and sole clerk of his grandfather's country store near Chicago.

Dream' from "Lohengrin," Schubert's "Erkling" and Macdowell's "To A Wild Rose."

SOLVES A KNOTTY PROBLEM



Irene Rich, NBC actress, calls this a "compromise coiffure"—bobbed hair brushed back from the face and dressed to look as if it is long. Gives you that cool, calm and collected feeling, says Irene.

PHIL BAKER SIGNS GROUP SINGERS TO TAKE OVER VOCALS ON NEW SERIES

Group of Seven Voices, Four Boys, Three Girls, Along With Comedian on Beetle, Bottle Spot

Phil Baker, the Great American Trouper, has signed the Earl Towner Singers to take over the novelty vocal duties on his new CBS series of programs with Beetle, Bottle, Al Garr, and the Oscar Bradley orchestra.

The group of seven voices—four boys and three girls—led by Earl Towner, are supplying the familiar "Rolling Along" theme for the program, which was written by star Phil Baker especially for his show. They will also supply special effects for Maestro Bradley's unusual orchestra arrangements.

Towner, one of the foremost vocal directors in the country, has fashioned his septet along the newest of streamlined choral designs. Instead of directing just a septet, he has brought together an experienced male quartet and an experienced girl trio for his unusual effects. The singers therefore sing not only as a group, but can be broken up into two different sections.

Towner was born in Letah, Washington, and received his degree at the college of the Pacific. He went from there to the New England Conservatory of Music, where his brilliance in vocal and instrumental arranging won him a scholarship. He returned to San Jose, California, to play an organ and direct a male chorus for radio, then went to San Francisco as orchestra leader and

"Friendly Music" Will Feature Waddington and Famous Vocalists

On Sunday, October 17, at 9:30 p. m. EST, Geoffrey Waddington, noted Canadian conductor, will direct his concert orchestra in familiar ballads and selections from light operas on the programme "Friendly Music," to be presented from the Toronto studios to the national network of the Canadian Broadcasting Corporation. Allan Wilson, well known tenor soloist who has frequently appeared over the major networks in the United States, and Frances James, lyric soprano, will be guest vocalists.

The orchestral highlights will include Schubert's beautiful "Serenade"; the popular "Shadow Waltz"; and "None But the Lonely Heart," by Tschalkowsky. Frances James will sing Victor Herbert's "Kiss Me Again" immortal ballad "Just a Kiss at Twilight." Allan Wilson will present "Serenade" from Romberg's famous opera "The Student Prince" and "Just a Little Love a Little Kiss."

Albert Pratz, violinist, will play "Souvenir" by Brdla, accompanied at intervals by the orchestra. Pratz was recently a guest soloist with the Promenade Orchestra and is a former student at Mischa Mischakoff, concert master of the newly organized NBC Symphony Orchestra under the direction of Toscanini.

chief arranger for a West Coast network outlet. He left that to become musical director of a national radio agency and act as producer and vocal director of the Horace Heidt programs. Later, he returned to San Francisco as West Coast musical conductor for the Columbia Broadcasting System.

The vocal maestro transferred his activities to Los Angeles when he found that two-thirds of the vocalists he had ever coached were making their headquarters in the movie city. When asked to form a group for the Baker show, he selected seven of the best singers that had ever been under his tutelage.

STOPWATCHES ARE VALUABLE TO RADIO BUT NOT STARS

There is no profession outside of the sports world in which the stopwatch is so prominent as in radio. Radio stars, however, reacted to their first acquaintance to the gadget in the same way that John Doe would. For example:

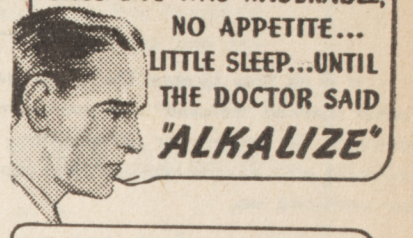
Fibber McGee was so impressed by the watch, he put it to first practical use in seeing how long it took him to don his socks. The first effort took 58 4-5 seconds. Now, however, he says he can put his socks on in eight seconds flat—if he doesn't get too excited and try to pull them on over his shoes.

When Andre Kostelanetz first got a stop watch he told a member of his staff to hold it and "clock" rehearsal. At the end of the first number, however, Kostelanetz found that the musician didn't have the right figure. He had been timing the "life" of his cigarette instead!

Jack Oakie's first experience was in the scientific timing of gags during rehearsal. The instrument was bereft of value, though, when it came

I LEARNED TO 'BEAT' ACID INDIGESTION

ONCE LIFE WAS MISERABLE, NO APPETITE... LITTLE SLEEP...UNTIL THE DOCTOR SAID 'ALKALIZE'



BUT NOW—AT THE FIRST SIGN OF ACID-INDIGESTION I USE PHILLIPS' AND I FEEL LIKE A NEW PERSON ALMOST IMMEDIATELY!

The fastest way to "alkalize" is to carry your alkaliizer with you. That's what thousands do now that genuine Phillips' comes in tiny, peppermint flavored tablets—in a flat tin for pocket or purse. Then you are always ready.

Use it this way. Take 2 Phillips' tablets—equal in "alkalizing" effect to 2 teaspoonfuls of liquid Phillips' from the bottle. At once you feel "gas," nausea, "over-crowding" from hyper-acidity begin to ease. "Acid headaches," "acid breath," over-acid stomach are corrected at the source. This is the quick way to ease your own distress—avoid offense to others.



to the actual broadcast—because the announcer made the audience limit its applause in order to precipitate action of the show!

If rumor is true, George Burns saved Gracie's Allen life during her first stop watch experiment. Gracie—or so the story goes—had to be shaken up by George when she used the watch to see how long she could hold her breath. It seems she forgot to set the fraction hand on recording!

Special Round Trip Bargain Fare CHIPMAN TO NORTH DEVON \$100

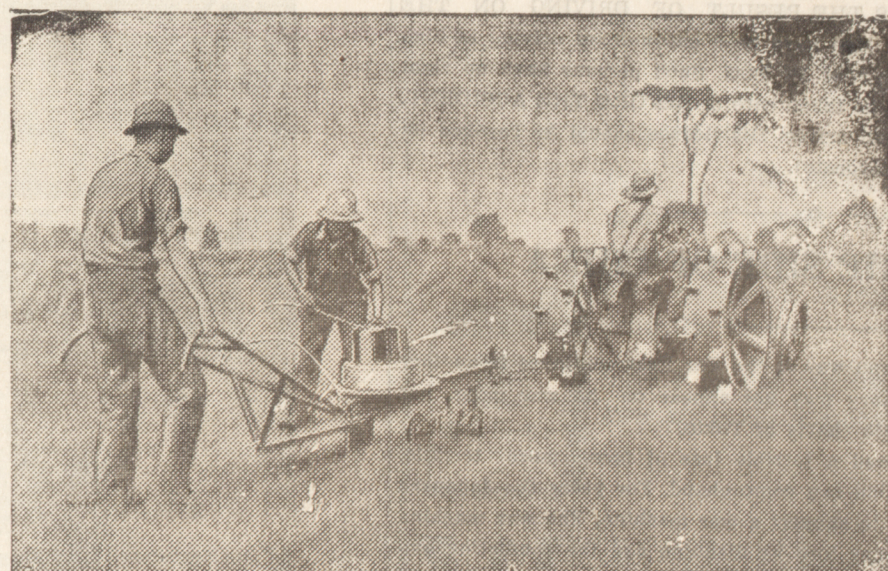
Going Date: Saturday, October 30, 1937

Return Limit: Monday, November 1, 1937

Tickets good in coaches only. No Baggage checked. Full Information and tickets from Agents.

CANADIAN PACIFIC

Plow Assists Radio Engineers



Even in these days of advanced science the radio engineer turns to the humble plow—perhaps man's first mechanical achievement—to assist him in the construction of an ultra-modern high powered broadcasting station. Here we see the plow, specially designed by J. B. Radford, in charge of installation of the two 50 kilowatt stations, at Hornby, Ontario, and Vercheres, Quebec, which are being built for the Canadian Broadcasting Corporation by the Northern Electric Company Limited, in Montreal. The plow is used for the burying of 15 miles of copper wire in the form of a huge wheel at the base of the 650 ft. radiating tower, at the top of which, as shown in our sketch, is an aerial beacon. This mass of wire forms a perfect ground system and is as wide as the tower is high. These two stations, the most powerful in Canada, will be on the air early this Fall.

