



# IT'S TIME TO CHECK YOUR CAR



## REPLACEMENT MUFFLERS

EXHAUST AND TAIL PIPES FOR  
ALL POPULAR CARS  
Replacement Truck and Passenger  
Cars Axles—Ring Gears—Pinions—  
Grease Retainers and Clutch Facings  
Complete Line of Cylinder Head  
GASKETS

## STEELCOTE RUBBER ENAMEL

Makes your car or furniture like new!  
One pint equals two pints of any other  
enamel. One pint paints the average  
car. Leaves No Brush Marks.  
STEELCOTE WHITE TIRE PAINT

## COMPLETE IGNITION SERVICE

Points, Condensers, Caps, Coils, Ro-  
tors, Generator Brushes, Starter  
Brushes, Complete Hydraulic Brake  
Replacement Parts, Plungers, Pistons,  
Cylinders, Brake Tubes and Fittings  
COMPLETE LINE OF FUEL PUMP  
PARTS

## Complete ARMATURE EXCHANGE

For All Popular Cars and Trucks  
COMPLETE BENDIX Drive Exchange

## CAR - TRUCK TIRES and TUBES

At Money Saving Values  
BICYCLE TIRES AND TUBES  
CAR FLOOR MATS—Plain or Felt  
Backs for Any Car or Truck  
REDUCED PRICES



## TIRE RELINERS FOR Passenger Cars and Trucks — 93 cents up —

TRUCK CLEARANCE LIGHTS  
— 30 cents up —  
IGNITION CABLE SETS  
Battery Ground Straps and Starter  
Connections

## Headlight and Tail-light LENSES

For All Popular Cars and Trucks  
Complete Line of Chevrolet and Ford  
Replacement Parts  
Plain and Locking Door Handles For  
Popular Cars

## Money Saving Values In Guaranteed MOTOR OIL

MOVALINE 100% Pennsylvania  
2 Imperial Gals.—\$1.80  
MOVALINE SUPERIOR  
2 Imperial Gals.—\$1.60  
MOVALINE STANDARD  
2 Imperial Gals.—\$1.40  
BULKOIL — 55 cents per GALLON  
— Bring Your Own Can —

## SPARK PLUGS AT REDUCED PRICES

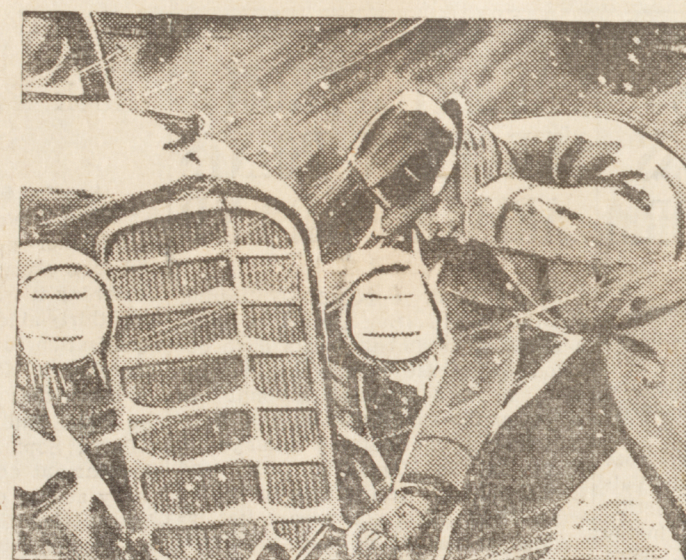
HEADLIGHT BULBS—25 cents  
FLASHLIGHT BATTERIES  
FLASHLIGHTS  
PATCHING KITS—15 cents  
CAR SIMONIZE—55 cents  
FOG LIGHTS—\$2.40 up

## Motorcycle Batteries

— \$5.00 —

## CAR BATTERIES GUARANTEED

11 Plate .....\$4.80  
13 Plate .....\$5.35  
15 Plate .....\$8.30



YOU CAN EASILY AVOID ANY COLD  
WEATHER TROUBLE IF YOUR CAR  
HAS A MONARCH BATTERY

THERE'S BIG

# Savings

FOR YOU IN OUR EXHIBITION  
WEEK SALE

# BAY AUTO PARTS

316 QUEEN STREET

:

PHONE 917



MEANS LOW COST CAR OPERATION