

# THEATRE of the AIR

ALL TIMES ATLANTIC STANDARD TIME

## MONDAY'S PROGRAMMES

CANADIAN BROADCASTING CORP.  
This is the official programme which you are entitled to receive over stations CFNB, CHSJ, CKCW, and CHNC.

CBC, OTTAWA, 550 K.  
6.00—Program Resume  
6.15—The Four of Us  
6.30—Amelia and her Accordion  
6.45—Closing Stock Quotations  
7.00—Dancing Strings  
7.30—Fanfare  
8.00—London Calling  
8.30—Major Bill  
8.45—Kathleen Stokes, organist  
9.00—Canada Week by Week  
9.15—Vocal Selections  
9.30—Germany Salutes Canada  
10.00—The Way to Peace  
10.30—With Andre Messenger  
11.00—Sam Slick  
11.15—Orchestra  
11.30—Sports in Canada  
11.45—The News  
12.00—On the Mark

## CKAC, MONTREAL, 730 K.

6.15—Eton Boys  
6.30—Sleepex Program  
6.45—The Fireside Program  
7.15—L'Heure Recreative  
7.30—A Baton Rompus  
7.45—To be Announced  
8.00—Melody Time  
8.15—Le Cure de Village  
8.30—Living Room Furniture  
9.00—Radio Vaudeville  
9.30—Radio Encyclopedie Frontenac  
10.00—Lux Radio Theatre  
11.00—Lassie Cavaliers  
11.15—Westinghouse Newscast  
11.30—Alex. Lajoie and Orch.  
11.45—To be Announced  
12.00—Molson Sports Reporter

## WEAF, NEW YORK, 660 K.

6.00—Songs by Bonnie Stewart  
6.15—Terry and Pirates  
6.30—Jack Armstrong  
6.45—Little Orphan Annie  
7.00—Vocal Program  
7.30—Press Radio News  
7.45—Billy and Betty  
8.00—Amos 'n' Andy  
8.15—Uncle Ezra  
8.30—New York on Parade  
9.00—Burns and Allen  
9.30—Voice of Firestone  
10.00—Fibber McGee and Molly  
10.30—Hour of Charm  
11.00—Contented Program  
11.30—Music for Moderns  
12.00—Orchestra  
1.00—Larry Burke, tenor

## WABC, NEW YORK, 860 K.

5.00—Betwee the Book Ends  
5.15—Orchestra  
5.30—Music from the Gold Coast  
6.00—Follow the Moon  
6.15—Life of Mary Sothern  
6.30—Children's Corner  
6.45—Hilltop House  
7.00—Vocal Selections  
7.15—New Horizons  
7.30—Press Radio News  
7.45—George Hall's Orch.  
8.00—Poetic Melodies  
8.15—Song Time  
8.30—Jay Freeman and Orch.  
8.45—Boake Carter  
9.00—Alemitte Half Hour  
9.30—Pick and Pat  
10.00—Lux Radio Theatre  
11.00—Wayne King's Orch.  
11.30—Brave New World

## WBZ, BOSTON, 990 K.

6.00—Neighbor Nell  
6.15—The Four of Us  
6.30—The Singing Lady  
6.45—Tom Mix  
7.00—U. S. Army Band  
7.30—Press Radio News  
7.45—Charles Sears, Tenor  
7.55—Lowell Thomas  
8.00—Time to Shine  
8.30—Lum and Abner  
8.45—Vocal Program  
9.00—Gen. Hugh Johnson  
9.15—Campbell's Royalists  
9.30—Campana's Vanity Fair  
10.00—Philadelphia Orchestra  
11.00—Behind Prison Bars  
11.30—National Radio Forum  
12.00—Orchestra  
12.15—King's Jesters  
12.30—Orchestra  
1.00—Orchestra

## WTIC, HARTFORD, 1040 K.

6.00—Hank Keene  
6.15—Terry and Pirates  
6.30—Jack Armstrong  
6.45—Little Orphan Annie  
7.00—News  
7.15—The Revellers  
7.30—Wrightville Clarion  
7.45—Jack the Inquisitor  
8.00—Amos 'n' Andy  
8.15—Uncle Ezra  
8.30—George Jessel  
8.45—White Eagles  
9.00—Burns and Allen  
9.30—Margaret Speaks, Soprano  
10.00—Fibber McGee and Molly  
10.30—Hour of Charm  
11.00—Contented Program  
11.30—Guy Hedlund and Company  
12.00—News  
12.30—Orchestra  
1.00—Weather

## TUESDAY'S PROGRAMMES

CANADIAN BROADCASTING CORP.  
This is the official programme which you are entitled to receive over stations CFNB, CHSJ, CKCW, and CHNC.

CBC, OTTAWA, 550 K.  
6.00—Program Resume  
6.15—Edward Davis, Songs  
6.30—Doris Scott, Songstress  
6.45—Closing Stock Quotations  
7.00—Rakov's Orchestra  
7.30—The Witching Hour  
8.00—Luigi Romanelli and Orch.  
8.30—The Children's Album  
8.45—Roland Todd, Organist  
9.00—This English  
9.15—Ottawa Temple Choir  
9.30—Symphony in Rhythm  
10.00—Bonjour Paris, Monsoir  
10.30—R.C.M.P. Dramas  
11.00—Symphonic Strings  
11.30—I Remember  
11.45—The News  
12.00—Music for Music's Sake  
12.30—In a Modern Mood

## CKAC, MONTREAL, 730 K.

6.15—Summary and weather  
6.30—Sleepex Program  
6.45—The Fireside Program  
7.15—L'Heure Recreative  
7.30—Le Reporter Salada  
7.45—Programme Valda  
8.00—L'Ecole de Hockey de l'Air  
8.15—Song Time  
8.30—Queens Hotel Trio  
8.45—The Don Juan of Song  
9.00—The Provincial Hour  
10.00—Di-So-Ma  
10.45—Silver Strings  
11.15—Westinghouse Newscast  
11.30—Del Casino, Songs  
11.45—Four Stars  
12.00—Molson Sports Reporter  
12.30—Orchestra

## WEAF, NEW YORK, 660 K.

6.00—Songs by Carlotta  
6.15—Terry and his Pirates  
6.30—Jack Armstrong  
6.45—Little Orphan Annie  
7.00—Science in the News  
7.15—Don Winslow of the Navy  
7.30—Press Radio News  
7.45—Today's Sports  
7.55—Billy and Betty  
8.00—Amos 'n' Andy  
8.15—L'Cal Varieties  
8.30—Steine Fiddle Boys  
8.45—Benno Rabinoff  
9.00—Johnny Presents  
9.30—Lady Esther's Serenade  
10.00—Vox Pop  
10.30—Hollywood Mardi Gras  
11.30—Jimmy Fidler  
11.45—Serenade  
12.00—Violin in the Night  
12.15—Orchestra  
12.30—Orchestra

## WABC, NEW YORK, 860 K.

5.00—Myrt and Marge  
5.15—Bob Byron, whistler  
5.30—Story of Industry  
6.00—Follow the Moon  
6.15—Life of Mary Sothern  
6.30—Dear Teacher  
6.45—Dorothy Gordon's Corner  
7.00—All Hands on Deck  
7.30—Press Radio News  
7.45—Sports Resume  
7.55—George Hall's Orch.  
8.00—Poetic Melodies  
8.15—Song Time  
8.30—Famous Actors' Guild  
9.00—Newspaper Drama  
9.30—Al Jolson Show  
10.00—Watch the Fun Go By  
10.30—Jack Oakie College  
11.00—Swing School  
11.30—Russell Dorr, Baritone  
11.45—Four Stars  
12.00—Tomorrow's News Tonight  
12.30—Orchestra

## WBZ, BOSTON, 990 K.

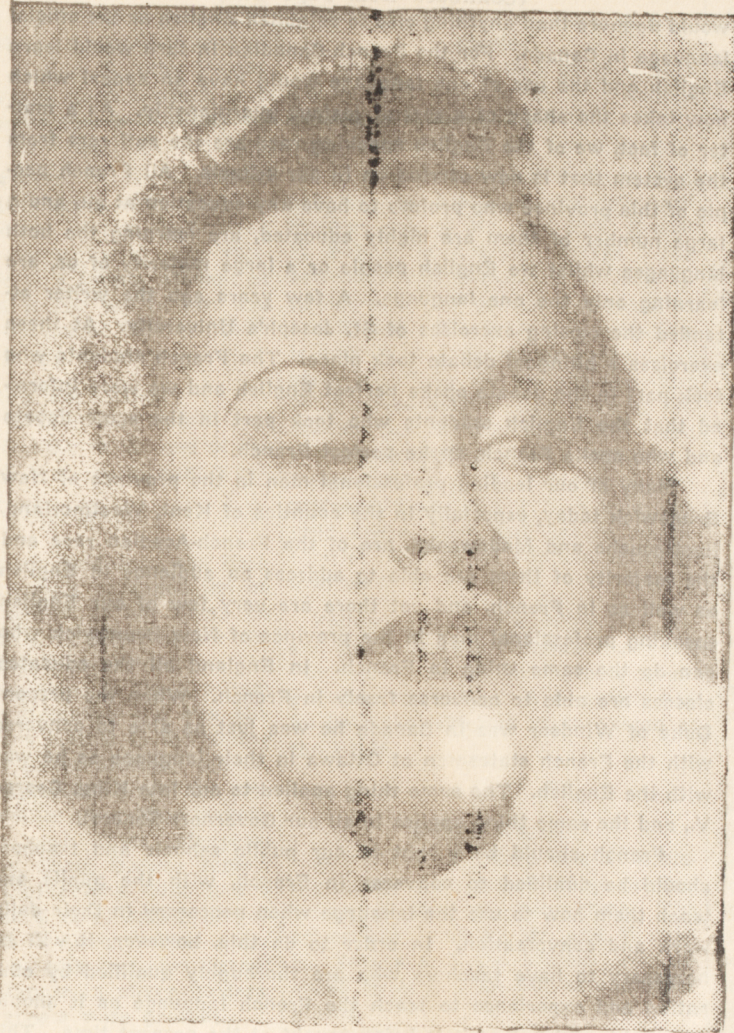
6.00—Peggy Wood Calling  
6.15—Edward Dacies  
6.30—Singing Lady  
6.45—Tom Mix  
7.00—String Time  
7.30—Press Radio News  
7.45—Tony Russell, Tenor  
7.55—Lowell Thomas  
8.00—Easy Aces  
8.15—Dramatic Program  
8.30—Lum and Abner  
9.30—Edgar A. Guest  
9.00—Husband and Wives  
10.00—To be Announced  
10.30—Roy Shield Review  
11.00—Gen. Hugh Johnson  
11.30—Orchestra  
11.45—Past Masters' Program  
12.00—Vacatonds  
12.15—King's Jesters

## WTIC, HARTFORD, 1040 K.

6.00—Songs by Carlotta  
6.15—Terry and his Pirates  
6.30—Jack Armstrong  
6.45—Little Orphan Annie  
7.00—News  
7.15—Studio Program  
7.30—Wrightville Clarion  
7.45—Shero Trio  
8.00—Amos 'n' Andy  
8.15—Vocal Varieties  
8.30—Chateau News Reporter  
9.00—Johnny with Russ Morgan  
9.20—Wayne King's Orchestra  
10.00—Vox Pop  
10.30—Hollywood Mardi Gras  
11.30—Jimmy Fidler  
11.45—Miss Fisher Directs  
12.00—News

## WHO'S ZOO IN MUSIC AND DRAMA ON NBC --

LYON



If you want to make a hit with this Lyon, feed her spinach; she loves it. Irma is the pretty feminine half of the NBC piano team of Marlowe and Lyon, heard on their own program and recently as guests on the NBC Jamboree, the Night Club, the NBC Matinee and other Chicago shows.

FOX



Templeton Fox, the girl who began her career as a singer in Los Angeles, then starred for two years with the Pasadena Community Playhouse, today is one of the busiest actresses at NBC Chicago studios. You've heard her in Dan Harding's Wife and other serials.

### LOST CONCERTO TO BE AIRED VIA N. B. C.

NEW YORK, Nov. 22—If you set your alarm a little ahead of time on Friday, Nov. 26, you'll be able to catch the premiere performance of Schumann's "Lost Concerto" for violin and orchestra before you leave for the office.

The concerto, recently discovered in the archives of the Berlin State Library, will be given in a special performance of the Berlin Philharmonic Orchestra, and will be heard in this country exclusively over the NBC-Red Network from 8:05 to 8:45 a.m., AST. The NBC networks normally begin operation at 8:30 a.m., AST.

The premiere of the now famous composition had previously been announced for Oct. 20 by the BBC Symphony Orchestra with Jedy d'Aranyi

### PROGRAMME FINDS STARS THROUGH UNUSUAL "MAP"

NEW YORK, Nov. 22—A talent map of the world, which tells instantly where virtually every major artist can be found on any given day, is one of the many unusual adjuncts of the Magic Key of RCA program that is broadcast each Sunday at 2:00 p.m.,

as the sole performer. Almost at the same time the American press carried the story that Yehudi Menuhin had received first performance rights and would play the work Nov. 12 with the St. Louis Symphony Orchestra. German government authorities, however, decided that the premiere should take place in Germany. Through negotiations with the Reichs Rundfunk Gesellschaft, NBC obtained exclusive broadcast rights for the United States.

AST, over the Blue Network of the National Broadcasting Company.

The map, which strictly speaking, is not a map at all but a small sheaf of papers in the form of a book, is a very necessary adjunct to the planning of the Magic Key program. It is made up by the artists themselves, since rarely does any artist of note leave his regular address without letting the managers of the Magic Key of RCA where he will be in the future.

The map shows not only the location of artists, but also the location of events of interest the world over that may be worthy of presentation. The event must be of unusually high quality and of interest to everyone before it can be accepted by the strict Magic Key program board.

An example of how the map operates may be seen in the South American tour of the great negro contralto, Marian Anderson. She sang several months ago for the Magic Key from Philadelphia. She left almost immediately for South America, reporting her itinerary to NBC. Weeks later she was heard again, this time from Buenos Aires.

### AUTHOR TELLS HOW HE KEEPS SERIAL FRESH

HOLLYWOOD, Nov. 22—Carlton E. Morse, who writes the equivalent of four full-length novels a year on One Man's Family, never frets or tears his hair over the script. This is given as a reason why the broadcasts of the serial sponsored by Tender Leaf Tea over the NBC-Red Network at 9 p.m., AST, each Wednesday sound so fresh and the characters so real.

Morse has a simple rule: — when words stop coming he stops writing and leaves the story right there, pulls down the window of his office and goes out. He may stop right in the middle of a line.

Lines written under pressure are never true to the character of the actor or actress who reads them, he believes. When his job gets tough, he puts on his hat and goes home, to a movie, baseball game, football game,

### MUST BE READY FOR ANYTHING WILLIS OF CBC

An On-the-Spot Broadcast Must Be Prepared to Take Anything In Stride.

The broadcaster who would do an "on-the-spot" show from the side of a country road must be prepared to take anything in his stride as part of his work. And "anything" here includes off the record sound effects, such as those produced by a truck whose driver possesses a vocabulary fit to blister the finish off a microphone.

On one of the recent "Within These Walls" broadcasts — the one from Champlain's Habitation at Lower Granville in Nova Scotia — a rather amusing happening disturbed the opening "on the spot" portion of the broadcast with, fortunately, no very bad results. By the remains of the building, near which runs a little used back road, Frank Willis, the CBC's commentator, was seated at his microphone, with a lantern held above him by Berton Robinson, author of many of the plays in this series. The spot where lie the ruins of the old habitation, built over 300 years ago, is suspected by some of the natives of being haunted.

Hardly had the broadcast commenced, with a description of the old habitation, the quietness and loneliness of the surroundings, when, drawing near along the usually deserted road, came a clanging which materialized into a truck that had seen its best days. Its driver, none the more steady for having sampled overly of the cider vats, brought his noisy vehicle to a stop, opened the door, banged it behind him, and in the choicest of words for which truck drivers have become famous, demanded to know what was wrong. All this was new to the discomfort of Willis and Robinson, both of whom were much too occupied to do anything about it—Willis with his broadcast, and Robinson with microphone and lantern.

The tipsy truck driver who thought evidently that either he was witnessing a display of the supernatural, or a bad accident, finally and fortunately tumbled to what was going on. Someone frantically whispered that the commentator was on the air. With a disgusted "Oh, is that all," he retraced his steps, an accomplishment in itself, to his truck, banged the door again, and drove noisily off.

Probably the only car that passed all night, it would, of course come along during the only five minutes that mattered at all.

or to the beach. He stays away from his typewriter until he really wants to work. The desire always comes back to him, he says, long before his deadline.

**HOW TO WIN FRIENDS AND INFLUENCE PEOPLE BY Dale Carnegie**

1. What are the six ways of making people like you? See pages 83 to 145.  
2. What are the twelve ways of winning people to your way of thinking? See pages 149 to 241.  
3. What are the nine ways to change people without giving offense or arousing resentment? See pages 245 to 263.

**BECOME GENUINELY INTERESTED IN PEOPLE**

1. "If you would make friends, be friendly. Forget your own interests. Think of other people's interests. You can make more friends in two months by showing that you are interested in other people than you can in two years by trying to force other people to become interested in you."

2. "People are not interested in you—or in me. They are interested in themselves—first, last and all the time. When you see a group photograph that you are in, whose face do you look for first?"

3. "Ask yourself this question:— 'Why should people be interested in me unless I am first interested in them?' 'If you merely try to impress people and get people interested in you, you will never have many true, sincere friends. Friends, real friends, are not made that way.'"

4. "But you can win the attention and time and cooperation of even the busiest, most sought after people by becoming genuinely interested in them. So if you want to make friends, put yourself out to do things for other people."

### HAVE YOU SMOKED A TURRET LATELY?

ONE way to show interest in other people is to introduce them to the satisfying goodness of Turret cigarettes. They'll quickly appreciate Turret's original and unique blend of choice Virginia tobaccos, which makes Turret just that much different — just that much better. Show them, too, that the Turret package has a handy calendar on the back! Imperial Tobacco Company of Canada, Limited

Quality and Mildness

**Turret**

CIGARETTES

PLAIN OR CORK TIP