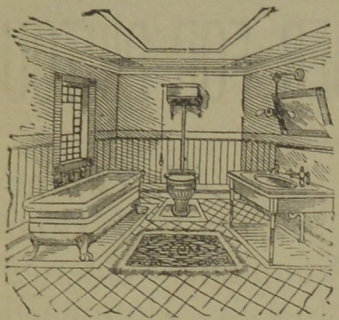


If we have your Size, you are sure of a bargain, We have a fine line **25p.c.** of New Spring Suitings at - -

Below Regular Prices.  
Don't Delay. Call At Once.

**Walker Bros. Importing Tailors**  
QUEEN ST. - - FREDERICTON N. B.



### What Additional Percentage DOES GOOD PLUMBING COST?

Compare the cost of plumbing fixtures with the TOTAL COST of your building. Then realize the actual value that well-designed durable bath room equipment will add to its total value in future—to say nothing of added comfort, or saving in repairs. We aim to excel in the quality of materials and Workmanship.

**D. J. SHEA, Carleton St.**

### DENTISTS

**DR. J. B. CROCKER DENTIST**

Office Kitchen Building  
Opposite Post Office  
Telephone, Office, 419-11. House 87-41

**Dr. GREENE - Dentist**

Main Office and Residence, King Street. Branches at Stanley, Millville and Pokiok. At Stanley office six days, beginning the 9th of each month. At Millville 16th and 17th. At Pokiok 18th and 19th of every month.

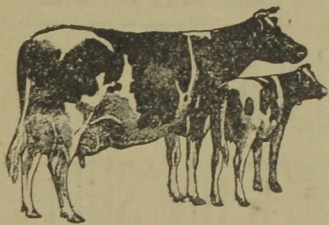
**Dr. Barbour DENTIST**

Inches Building  
Cor and Queen Sts.

**W. J. IRVINE**

DENTAL SURGEON  
Opp. Soldiers' Barracks  
and next door to Bank of N. B. building, Queen Street.  
Office Hours—10 a. m. to 1 p. m.; 2 p. m. to 5 p. m.  
PHONE 219-11

**HOLSTEIN MILK**



**Health Vitality Nutrition**

Best for Babies Invalids and the Sick :: ::

For Descriptive Booklet concerning this milk which is recommended by all leading physicians and hospitals apply to

**WEST END DAIRY**

**WHEN IN NEED OF A QUICK LUNCH**  
CALL AT

**WASHINGTON'S CAFE**  
YORK STREET

BOILED LOBSTERS  
STEAMED CLAMS  
BUCCOUCHE and P.E.I. OYSTERS  
Always on Hand

TRY OUR 35c DINNER

SERVED FROM 12 UNTIL 2.

**Advertise in the Daily MAIL**

## THE ALLIANCE ENDORSE MR. ROWELL'S POLICY

(Toronto Globe)

"That this convention hails with delight the advanced stand taken by the Liberal party in the resolution of which N. W. Rowell, K.C., M. P., the leader of that party, has given notice in the Legislature that he will move for the immediate abolition of the bar, including hotel and club licenses; also the treating system, and placing such other restrictions upon the residue of the liquor traffic as experience may show to be necessary to limit its operation and effectively remedy its evils. Local option to be maintained as a means of wiping out the residue of the retail sale where the electors so decide.

"That this convention calls upon all friends of the temperance cause to take steps to secure the nomination and election in every constituency of a representative who can be relied upon to do all in his power to secure the enactment of legislation for the suppression of the liquor traffic; and declares that anything less than the proposal of Mr. Rowell could not be looked upon as sufficient to entitle any candidate to the support of temperance electors.

"That this Alliance appreciates the action of the Provincial Government and Legislature in making amendments to the license act which make the working of the act more effective and notably for securing the enforcement of local option. Also we appreciate the action of the department in refusing to be bound by technicalities where it was really evident that local option had been carried at the polls."

With ringing cheers and singing of the Doxology, the Ontario Alliance yesterday made history by endorsing the efforts of a political party to destroy a traffic which the former organization set out to do many years ago. In the vernacular of the street, there was enthusiasm to "burn." The vast audience rose to its feet to a man, and for many minutes cheered and clapped until the corridors resounded. In short, the scene was remarkable, and many minutes elapsed before President Gibson could restore some semblance of order, so as to facilitate the business before the chair.

During the morning session it was generally rumored that a stiff fight was in store. That the mover, F. S. Spence, and seconder, Joseph Gibson, Liberal and Conservative, respectively, would have to fight every inch of the ground, but when the challenge of President Gibson came, to the effect that "who dares to contradict my statement that this vote is unanimous?" not a sound was heard, which subsequently gave rise to more vociferous cheering.

"Our God be praised," said Dr. Carman, the venerable head of the Methodist Church of Canada. "Words fail me," he continued, feelingly. "I am glad beyond expression that I have lived to see this day."

### A CLEAR-CUT POLICY

"You are favoring a clear-cut, understandable policy today," interjected John Bennett Anderson. "You mean business. There will be no drawing a red herring across the path of progress. We are bound to win." (Applause.) He wanted the name of Mr. Rowell withdrawn from the resolution but his efforts turned the applause he had won into cries of "Sit down!" "Vote, vote!"

"There are men who are afraid they will be called politicians for being here this afternoon," said F. S. Spence. "But are we men or mice? The man who is not true to his temperance principles because of politics is not true to himself, and I give the lie to those who say that we are afraid to vote for what we are afraid to vote for what we endorse. (Applause.) The saloon men fear votes, not resolutions, and it is a lie that temperance people are only good at resolving."

"We went to Rowell last year and asked him to do something for us. He has done it. Can we go back on him?" (Cries of "No") The vote was then taken.

### A NEW PRESIDENT

F. S. Spence, Hon. President; Canon Greene, President; First Vice-President, Joseph Gibson; Treasurer, Theron Gibson, and Ben. H. Spence Secretary, constitute the executive heads for the ensuing year, and the assumption of the chair by the new President was the signal for more cheering.

In his eulogy of the past, President Canon Greene stated the "grand old man" had set a pace which he thought he could not keep up. In explanation of his attitude towards the authorities in Queen's Park, he said: "The people on both sides are doing a grand and noble work. Every time they are asked to fulfill our desires. When we reach the Parliament buildings the thermometer rises to just about our level, and in this regard you must under-

stand that we are in a position to dictate terms. If we are only wise and prudent they will rise to the height we suggest."

A special appeal was made for \$5,000, towards expenses. During the proceedings \$1,600 was collected. A special committee consisting of F. S. Spence, Joseph Gibson, E. E. Parrott, J. W. Cooley and W. A. Wotton was appointed to draft a new code of rules for organizers. This will be in accordance with the new order of things caused by the passing of the resolutions.

## Was a Victim of Bronchitis.

**HAD TO BE PROPPED UP IN BED.**

Bronchitis is an acute inflammation of the membranes lining the air tubes of the lungs, and begins with a tightness across the chest, and a difficulty of breathing accompanied by a hard dry cough which later develops into the raising of a greenish or yellowish phlegm.

On the first sign of bronchitis you should check it immediately by using Dr. Wood's Norway Pine Syrup, and thereby preventing it becoming chronic and perhaps turning into some serious lung trouble. Mrs. John Fawcett, Salisbury, N.B., writes: "A year ago I was a victim of Bronchitis. I was so bad I could not lie down, and had to be propped up in bed. As the doctor failed to do me much good a friend, who came to visit me, advised me to try Dr. Wood's Norway Pine Syrup. The first bottle helped me so wonderfully I took five bottles in all, and was cured. I have not had an attack of it since."

Price, 25 and 50 cents a bottle. See you get "Dr. Wood's" when you ask for it. Manufactured only by The T. Milburn Co., Limited, Toronto, Ont.

## CANADIAN PACIFIC

### Special Low Rates

SECOND CLASS DAILY  
MARCH 15th to APRIL 15th.

From PICTOU  
To Vancouver, B.C.  
Victoria, B. C.,  
Portland, Ore.,  
Seattle, Wash.,  
Nelson, B. C.

San Francisco,  
Los Angeles,  
- \$64.95  
- \$65.65

EQUALLY LOW RATES  
FROM AND TO OTHER POINTS

See Local Agent or write  
W. B. HOWARD, D.P.A., C.P.R.,  
ST. JOHN, N. B.

## THE INTERNATIONAL RAILWAY

Uniting Campbellton at the head of navigation on Bay Chaleur with the St. John River Valley at St. Leonards and connecting the Intercolonial and Canadian Pacific Railway systems.

### Winter Time Table Summary

GOING WEST  
Express train leaves Campbellton daily (except Sunday) at 7.30 a.m. for St. Leonards and intermediate stations due at St. Leonards at 12.30 p.m.

GOING EAST  
Express train leaves St. Leonards daily (except Sunday) at 5.00 p.m. after arrival of C.P.R. express from St. John, Vancou-  
bor, etc., due at Campbellton at 10.00 p.m.

(Amplified in addition to above and to ordinary freight trains there is also a regular ACCOMMODATION TRAIN carrying passengers and freight running each way on alternate days as follows, viz: Going West—Leaves Campbellton at 8.00 a.m. for St. Leonards, and intermediate stations, Monday, Wednesday and Friday, due at St. Leonards at 4.20 p.m. Going East—Leaving St. Leonards at 8.30 for Campbellton, etc., Tuesday, Thursday and Saturday, due at Campbellton at 4.30 p.m.

Governed by Atlantic Standard Time.  
See local time tables and for full information regarding connections, etc., apply to R. B. Humphrey, freight and passenger agent, 55 Canterbury Street, St. John.

E.H. ANDERSON, Manager  
A.A. ANDREW, Traffic Mgr.  
THOMAS MALCOLM, Gen. Mgr.  
Campbellton, N. B.

## King George's Navy PLUG



**KING GEORGE NAVY PLUG CHEWING TOBACCO**

IS IN A CLASS BY ITSELF!

It surpasses all others in quality and flavour because the process by which it is made differs from others.—It is deliciously sweet and non-irritating.

SOLD EVERYWHERE: 10c A PLUG

ROCK CITY TOBACCO Co., Manufacturers, QUEBEC

## PEERLESS TEA

Specially prepared for my own trade and sold only at my store. Try a pound.

Sugar, Flour, Molasses always in stock at lowest possible prices. Butter and Eggs a specialty.

Fresh Fancy Biscuit always on hand.

RING UP 305 AND GIVE US AN ORDER.

**E. G. HOBEN** COR. KING and YORK STREETS  
:- Dealer in :-

all kinds of CHOICE FAMILY GROCERIES AND PROVISIONS



"In the Case of MY Little Girl—"

In choosing and using a soap for your "Little Fairy", you will find no soap so mild, so neutral, so agreeable to tender skins as FAIRY SOAP.

Being made from products that you could eat, FAIRY SOAP agrees with even the tender skin of a babe.

## FAIRY SOAP

is white—pure—floating. It comes in a handy oval cake. We could charge you five times the price asked for FAIRY SOAP and we could add nothing to its quality.

In higher-priced soaps you are paying for high-priced perfume and fancy wrappers—not better soap.

Made by  
THE N. K. FAIRBANK COMPANY  
Montreal

"Have you a little 'Fairy' in your home?"

"The Paper That Reaches The Buying Homes."

**Mr. Salesman!**

Don't Deceive Yourself

by thinking you have all the business you need or can do.

There are hundreds of other customers you could get in touch with if you use the columns of the MAIL to tell about your goods.

Advertise

in the  
MAIL

**The DAILY MAIL**