

NEWEST DESIGNS IN PARIS FASHIONS

EXAGGERATED and
Unusual Styles Char-
acterize This Season's
Costumes



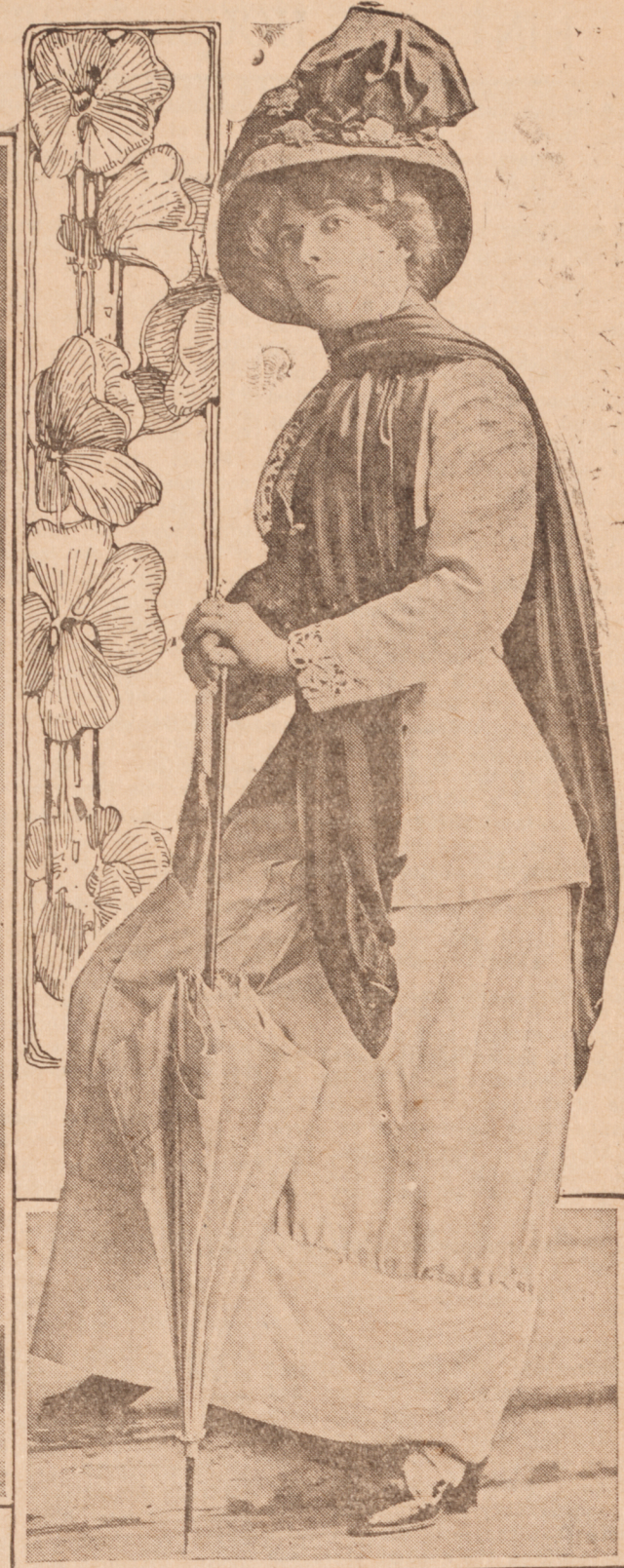
Coral Liberty Gown with Gray Embroidery

Photo Copyright, 1910, by Reutlinger
Exclusive Copyright, 1910, New York
Herald Company.



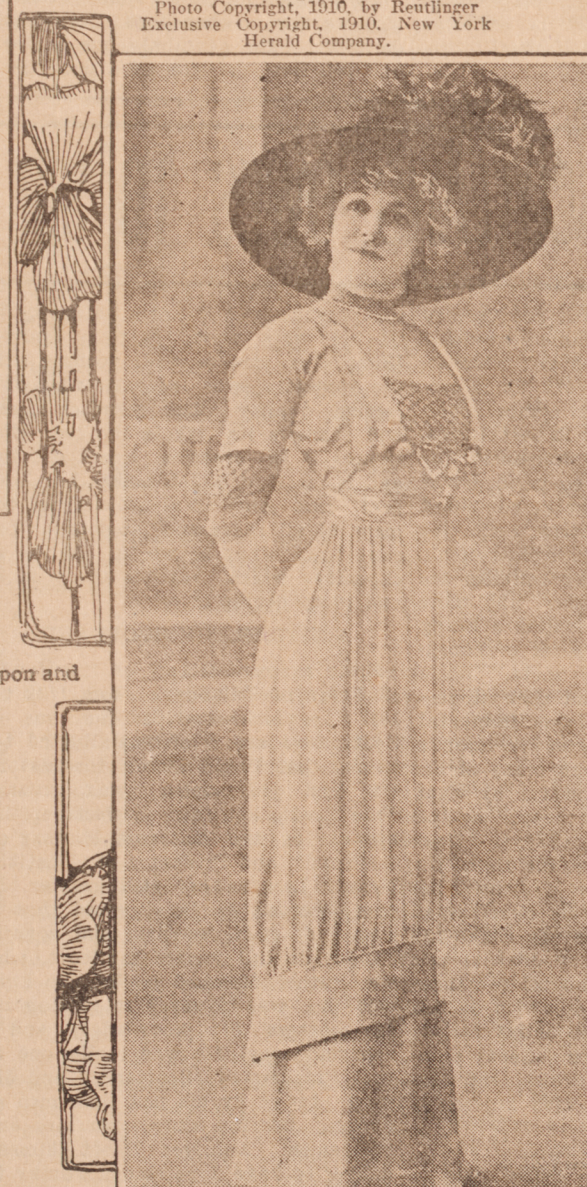
Gown of Foulard in Persian
Design

Photo Copyright, 1910, by Reutlinger
Exclusive Copyright, 1910, New York
Herald Company.



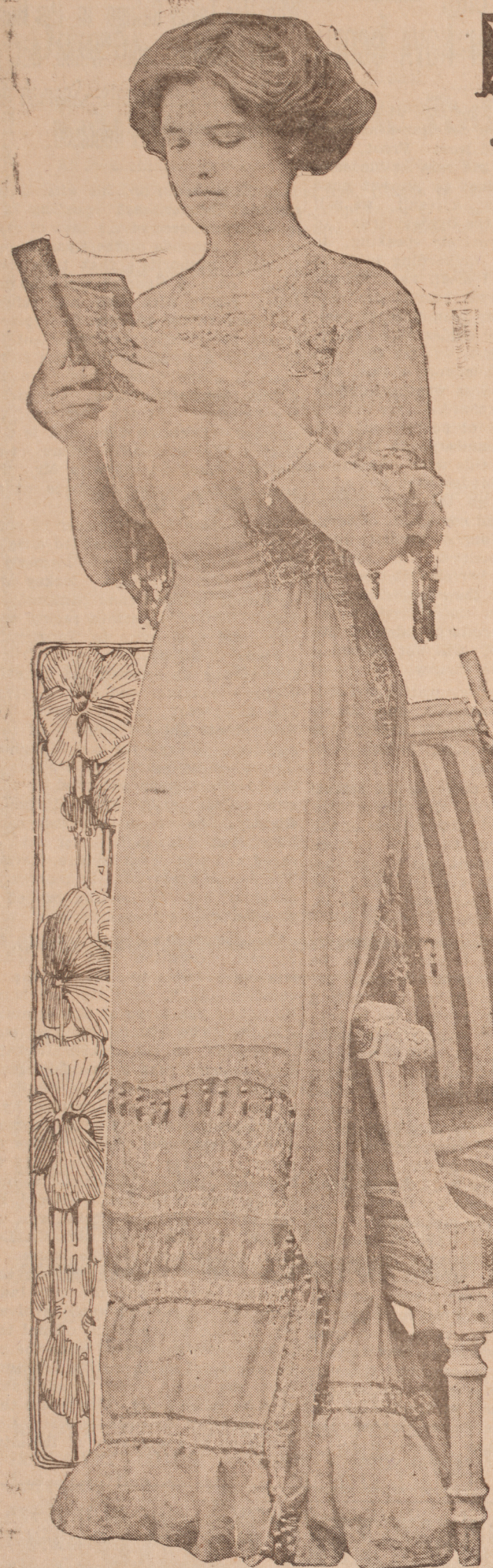
White Serge Costume

Photo Copyright, 1910, by Reutlinger
Exclusive Copyright, 1910, New York
Herald Company.



Gown of Violet Voile de Soie

Photo by Felix
Exclusive Copyright, 1910, New York
Herald



Nattier Blue Silk with Silk Embroidery

Photo Copyright, 1910, by Reutlinger
Exclusive Copyright, 1910, New York
Herald Company.

BY MRS. A. T. ASHMORE.

SUCH extraordinary eccentricity accidents in Paris, two women in trying as characterizes the fashions of the present season surely was never known in the world's history. The styles, the most exaggerated of the last ten centuries, have apparently been selected and put forward as the most desirable, while the accidents can easily take place. And yet sad fact exists that women who until these absurdly eccentric gowns are shown now have been select in their taste in dress not only contemplate with equanimity the absurd caricatures that the models present, but actually select the gowns as being not only possible but what they term smart.

When the story is current that on account of the extreme scantiness of the skirt, making it impossible for a woman to take a long step, there have been within the last fortnight several serious

how expensive and elaborate. Not only the simple styles for the morning and for practical wear, but for afternoon and often for the evening do the skirts clear the ground the same length all around, and with little or no train there is nothing graceful or becoming. The skirts of the serge and linen gowns are either held in around the ankles by a wide band which finishes the skirt around the bottom or have a band across the back holding in any fulness there may be in the back or side breadths. Rows of buttons on either side of this band are the only trimming, but if a more elaborate effect is desired then the skirt is finished with a broad band of satin, headed with one or two rows of braid. The cut of the skirt is a most difficult problem, for how to so calculate the possibility of walking with the amount of material required demands the most careful consideration.

Slenderners the Fashion.

It is required, to begin with, that every one shall look exceedingly thin, no matter how much her weight. Naturally the slender woman has the advantage, but even she must be most careful to have

her gowns cut to make her appear abnormally slight and flat. The waist line need not be so exaggeratedly small in diameter, for the straight up and down effect must be paramount, but if a tiny waist measurement can be secured, why

so much the better—from the dressmaker's point of view.

Satin and all satin finished materials are so alarmingly popular that already there are indications that the material will not remain in fashion indefinitely. For

the moment a satin costume, preferably black, is the smartest a woman can wear, the skirt short, round and extremely scant, is not so scant as when made in serge or linen and is straight up and down in line; the jacket quite short, also very straight, on the tailor made order, quite severe in design. A narrow piping or cording outlines the jacket and the seams of the skirt. A waist of chiffon, black over white, with gold or silver lace or satin ribbon veiled with the chiffon and with a narrow yoke and high collar of transparent lace, is worn with this costume, which will undoubtedly be copied this winter in cloth or cloth and satin combined. It is stated on good authority that the soft, lustrous taffeta silk will surely take the place of the satin before long, but that is a statement which requires verification before acceptance, and a woman who orders a heavy satin costume for the autumn or the lighter weight for summer can be quite contented with the knowledge that she is governed according to Dame Fashion's instructions.

or, rather, dots or rings—two dots to gether but widely separated from the next two. This is made with a draped skirt, narrow but not exaggeratedly scant, the lower part of the waist draped, the upper part a broad band of lace under mouseline de soie, with a narrow round yoke and high collar of the sheerest possible lace—the upper part of the sleeves and the waist are all in one piece and the folds of the foulard cross back and front over the veiled lace that goes around the figure. This gown shows the newest fashion in the draped effects and the foulard is so light and soft that it falls most gracefully into the folds required. Black and white is the most popular coloring, but in blue and white and gray and white there are charming copies of the model.

After much heartrending uncertainty in regard to sleeves it would seem as though a decision had finally been reached, and the small, tight sleeve has triumphed, for almost without exception sleeves are small; many are short, above the elbow; the smartest and most becoming are below the elbow, they fit quite close to the arm, are finished with a lace cuff or undersleeve and are quite elaborate in construction, with bands of lace under a veiling of mouseline de soie and then with folds of the material of the gown. In ball gowns there is merely an apology for a sleeve, fringe or a band of jewelled passementerie, with only the small lace cap sleeve, if required, to make the gown becoming. Coat and jacket sleeves are all small and most carefully fitted into the arm hole, so that there shall not be any fulness in the top of the shoulder; in fact, even in coats every effort is made to suppress the shoulder or armhole seam by cutting the upper sleeve in one piece with the waist—not an easy undertaking, be it realized. For theatre and the simpler style of evening gown the absolutely tight fitting sleeve of net with applique designs of embroidery in silver and gold is extremely smart and becoming, and, cut in one piece with the upper part of the waist, is most becoming. An old evening gown can easily be remodelled in this manner and there are any number of fancy nets and laces to be found at this time of year which are capital for this purpose, only be it remembered that the net must lie flat, not in folds, on the neck and upper part of the waist.

Black Trimmings Popular.

Foulard gowns are extremely smart at the present time, and while foulard is emphatically a summer material, these gowns will be worn until late in the autumn. There are many new designs, quite unlike any that have been displayed. There are some charming patterns in black and white and gray and white stripe, with a cross line of black, that are popular. These are made up with black liberty satin or black voile de soie and with a waistcoat effect in light blue or cerise, always with white lace yoke and collar, for the open neck is not considered at all smart in anything but lingerie or house gowns, and then only for young girls. In fact, the sheer lace or net yokes with the high collar are so universally becoming no woman with any pretensions to good taste ever chooses the other style for street wear. A most attractive foulard is the black satin with white dot-

FASHION DETAILS OF INTEREST TO THE HOME DRESSMAKER.



BODICE OF STRIPED HANDKERCHIEF LINEN.



LAVENDER MESSALINE.



WHITE SERGE WITH SATIN TRIMMINGS.

VERY often the home dressmaker does not give herself the least chance in the world to turn out a good looking gown because the person for whom the gown is intended is not properly attired for having it well fitted. It is hopeless, for instance, to expect a gown to look well when it has been fitted over stays that are too large, too long or are otherwise unsuited to the figure. The stays should be fitted perfectly before the new gown is attempted. Stays made to order are not inexpensive, but there are many shops where corsets of medium price are fitted without charge. If the customer herself takes a keen interest in the fitting and insists upon every detail being well attended to she will be able to get what she wants.

With properly fitting corsets which have the fashionable laces as a foundation for her work the amateur dressmaker will find the task of giving style to a costume much less difficult. Then she should be sure, also, that the corset cover fits well and that the underskirt is perfectly smooth over the hips. There should be no clumsy bands or even corsets around the waist to interfere with the fitting. The home dressmaker often endures handicaps of this sort which a professional dressmaker would refuse to tolerate.



WHITE SERGE WITH CHIFFON YOKE.



BLACK SATIN STREET SUIT.



VIOLET BATISTE GOWN.